

Look 1- Clayton (main  
model)



**Before shot**



Step 1- Place at least a  $\frac{1}{4}$  size amount of DESIGN Styling Gelin the palm of your hand (amounts will vary according to the thickness and texture of your hair)



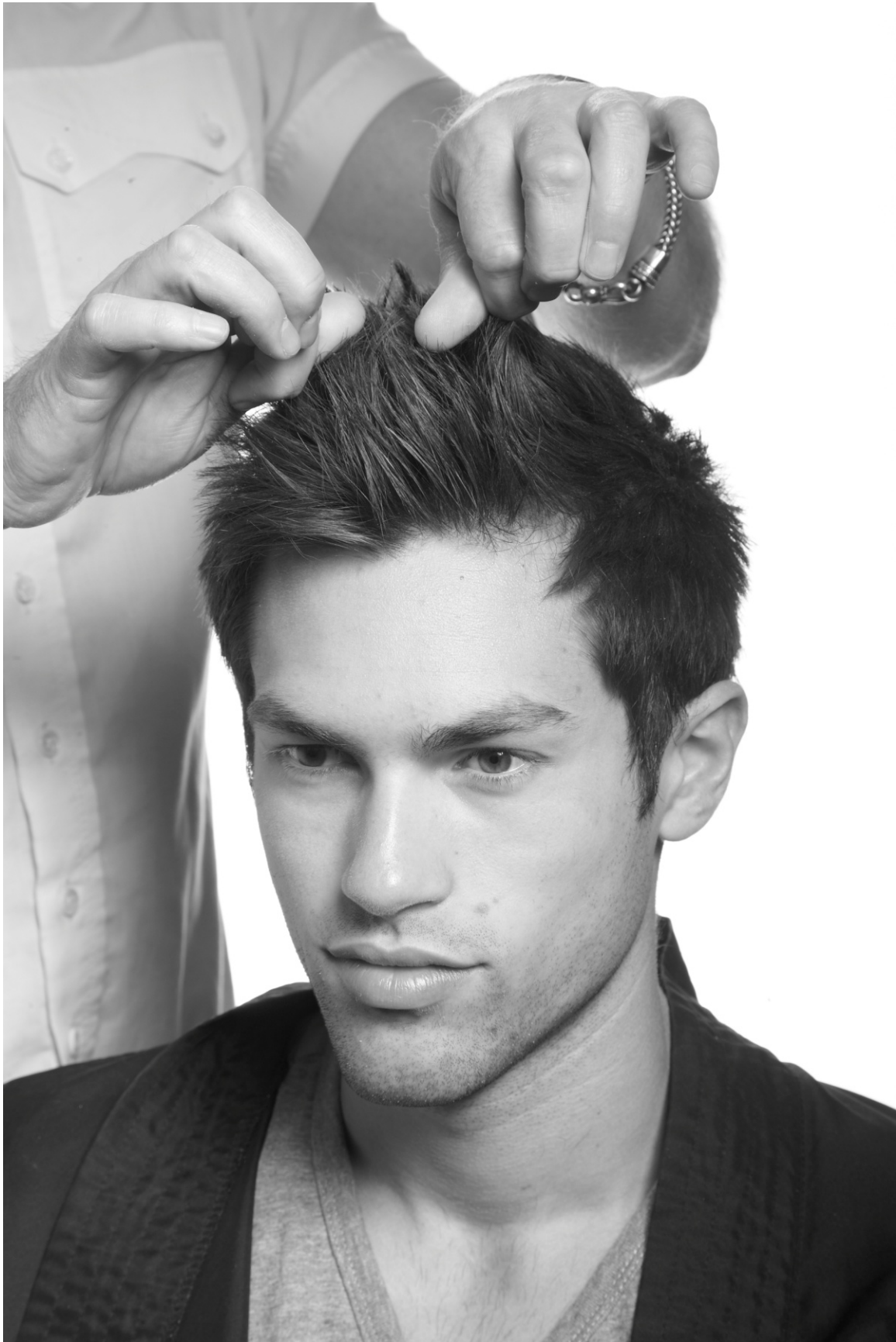
Step 2- spread the product throughout both palms until evenly distributed



Step 3- Now placing one hand at the back of the scalp and the other at the front, with open hands, begin to draw the product through the hair from roots to ends.



Step 4- Work in a massaging manor molding the hair as you go to take on the shape and style you require.



Step 5- Use fingers to finish any detail texture you wish for ends.

**Look 2 JUSTIN**



**Before  
shot**



Step 1- In the palm of your hand place the appropriate amount of the REFORM Styling Crème for your hair density .



Step 2- Move product through both hands so that you have a generous coverage from palms to figure tips.



Step 3- Begin from the front hair line and start to claw the hair back allowing the product to deposited as you work through, sliding from root to ends



Step 4- Once you have worked the product thoroughly throughout the hair, begin to manipulate the curl by scrunching the fingers in a fist



Step 5- Release from the fingers to check shape and body



Step 6- Continue until desired shape is achieved

# **LOOK 3 LALA Model**



Step 1- Using the nail scrape a small amount of **SHAPE** hard Wax from the tub



Step 2 Place in the palm of your hand.



Step 3- Vigorously rub SHAPE between palms to break down and warm the product



Step 4- With both palms on the head begin to push and manipulate the product through the hair from roots to ends



5(0052) Work firmly and vigorously at first to work the warmed product into place



6(0056) Now you can begin to rake the hair into shape and let it settle into your design.

**LOOK 4  
GIRL**



**Before  
shot**



Step 1- Place a  $\frac{1}{4}$  size piece of CONSTRUCT Molding Paste onto the palm of your hand (amounts will vary according to the length and thickness of your hair)



Step 2- As always massage the product through both palms for optimum use when transferring to the hair



Step 3 - Begin to rake the your fingers through the hair from the front to start distribution.



Step 4 - Continue through the sides of the hair drawing the hair up and blending the product through.



Step 5- Incorporate the back and then begin to draw the hair up into your desired shape



Step 6- Use your closed fingers to further manipulate the movement you wish to see



Step 7- Continue until full desired shape is complete.